

# New concept for DVR solutions

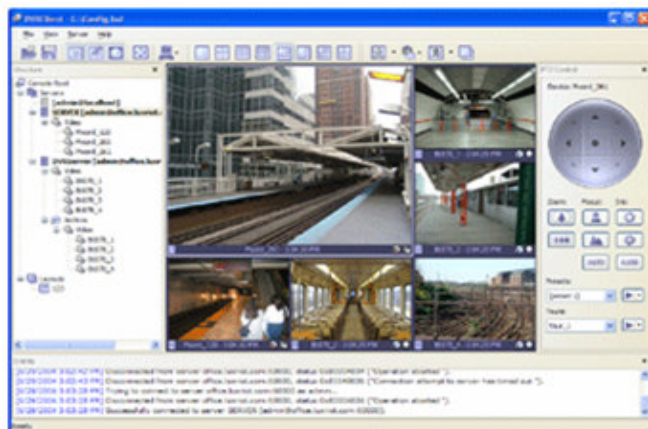
Scalability multi-view network surveillance software



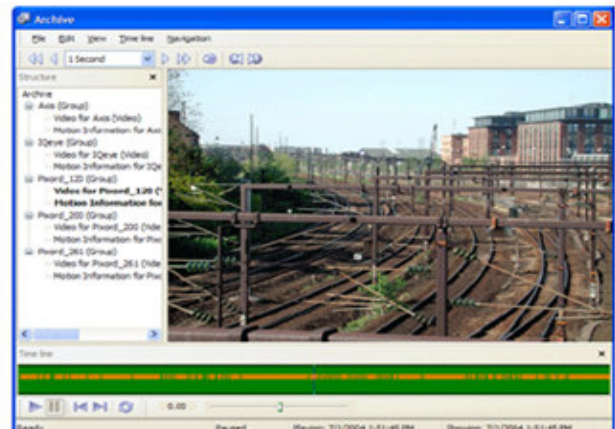
## Product Overview



LuxRiot is a Digital Video Recording and Remote Surveillance software package for the Windows based PC. LuxRiot offers principally new concept of DVR solutions – “One Software/Choice of Hardware”. This choice of hardware is not limited to different video capture cards with varying Frames-per-second rates and number of inputs. The choice is much greater: in addition to supported video capture boards, you can use many Network (IP) cameras from major manufacturers, Network (IP) Video servers, as well as any DirectShow compatible devices such as multichannel videgrabbers, and USB cameras.



DVRClient



Video playback

## Editions

LuxRiot DVR package consists of two applications: The DVR Server and The DVR Client. The DVR Server is a behind-the-scenes application that captures, processes and records video and then serves it to a local or remote DVR Client software. The DVR Client is the application that shows live and recorded video streams from a single DVR Server or multiple DVR Servers; it also allows users to configure and control DVR Server(s). In order to better suit our customers' needs and budget, LuxRiot has 5 editions. These editions range from Personal to Enterprise and each edition varies in the number of allowed cameras, the number of simultaneous remote DVR Client connections as well as other limitations, or lack thereof. However, all of the LuxRiot editions have the same user-friendly interface and functionality.

	Personal*	Basic	Professional	Advanced	Enterprise
Maximum Number of Cameras	1	4	9	16	unlimited
Maximum number of remote DVR Client connections	1	1	3	5	unlimited

\*LuxRiot DVR Personal Edition is a shareware product, which means you can try it first, and then buy it if you like it. Shareware version of Personal Edition is intended for the evaluation purposes only. Therefore, it has limited functionality, such as server does not accept remote connections, server cannot run as a Windows service and recording time is limited to 8 hours. FREE Download at <http://luxriot.gsf.com.my>

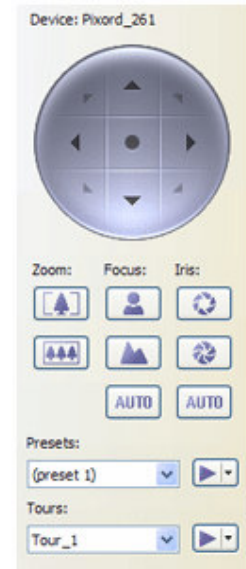
Authorized Dealer:



# Product Features

## Standard Surveillance Features:

- Continuous recording. Recording will be running 24/7.
- Multiple screen configuration options.
- Motion Detection.
- Remote connection via Internet and/or LAN. Server can be accessed from any part of the world for remote monitoring, video playback, user management and more...
- Real-time playback without interrupting recording. Any camera can be played back using Client application locally or remotely. Such playback will not interrupt ongoing video recording, nor the quality of the recording will be compromised



## Advanced Surveillance Features:

- **User-friendly wizards** make LuxRiot easy to use and configure. All commonly used operations, such as adding access to a new Server from Client application, searching for Network (IP) cameras, user management, etc. can all be performed via intuitive wizards. This helps make very advanced features accessible to an average computer user.
- **User Management** controls access to cameras and program features. Depending on user status, s/he can be either allowed or denied to perform the following operations: access archive, administer server, connect locally and connect remotely
- **Control PTZ cameras.** Pan, tilt and zoom cameras can be fully controlled from within the Client application.
- **Multiple clients can be connected to a single server.** Depending on edition and user management settings, 1 to unlimited number of local and remote client applications may access the server to receive live and recorder video, as well as perform other operations
- **Client can be connected to multiple servers simultaneously.** A client application user, if granted sufficient privileges, can connect to unlimited number of servers to view live or recorded video as well as perform other operations.
- **Each camera is individually configurable,** including: recording, motion detection, image adjustments (brightness, contrast, sharpness, hue, saturation) and more

## Unique features:



- **Supports unlimited number of cameras** (hardware limitations may apply). The enterprise edition imposes no limits on how many cameras can be connected to a server. Although hardware performance cap (mostly CPU performance and network bandwidth) may limit maximum number of cameras to several hundred cameras, however, time will void these limitations as computer hardware efficiency grows.
- **Efficient CPU usage.** If used along with the Network (IP) cameras and Network Video Servers the server will not use the CPU to compress video; this means that CPU usage will be low enough to avoid the interference with other software applications running on the same computer.
- **Fully-featured Client application** – all functions, without exceptions may be accessed both locally and remotely (only one user interface). Anyone operating the client application can connect to the server, access live and recorded video, change settings, etc. in accordance with granted user rights
- **Server can run as a Windows service.** This feature allows running LuxRiot server stay virtually unnoticed. Also the server can run without user logging into Windows, so the security of the system is not compromised
- **Full featured local and remote playback** with search on motion and areas of motion
- **Client configuration** (screen layout, connection to servers, etc) **is registered file** type, so it is possible to store different configuration on one computer, email them etc.
- **Support for the standard DirectShow devices.** The list of these devices includes everything from very basic USB cameras and camcorders to advanced multichannel video capture boards.
- **Screen may be configured for wide-screen monitor (WXGA).**
- **Supports all major brands of Network (IP) cameras and Network Servers.** The list of supported IP cameras is growing rapidly and an addition of not yet supported camera may be expedited upon request
- **Network Camera Search Wizard.** Using this Wizard a user is able to find all available Network (IP) cameras, configure them and connect them in no time and with little effort.
- **Full range of editions** for all needs and budgets from Personal to Enterprise.