



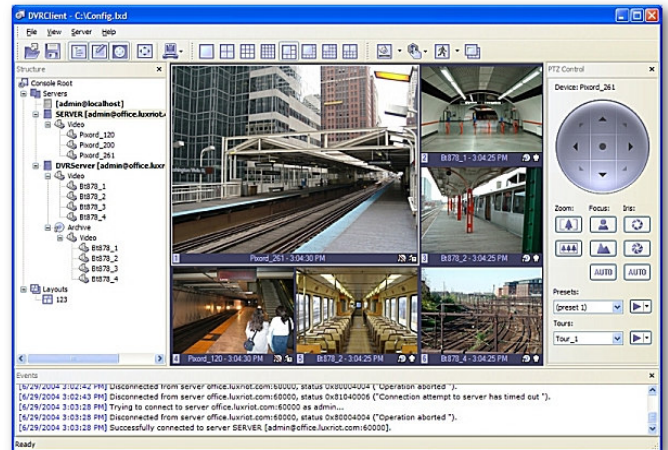
LX Series Enterprise NVR

Highly Scalable Network Surveillance System

Support multi brand IP cameras, analog and multiple HD (megapixel) cameras

Product Description:

The Enterprise Series NVR Server is an advanced security solution that integrates with over 390+ IP cameras from 45 manufacturers on a single 3U rack mount system, including support to megapixels and GSF High Definition CCTV Solutions. Fully featured client application offer all functions, without exceptions may be administered both locally and remotely (only one user interface). Each server can connect to multiple remote clients (VMS) and every VMS can connect any servers, any cameras. LX Series NVR Server powered by LuxRiot.



HIGH DEFINITION
CCTV
SOLUTIONS

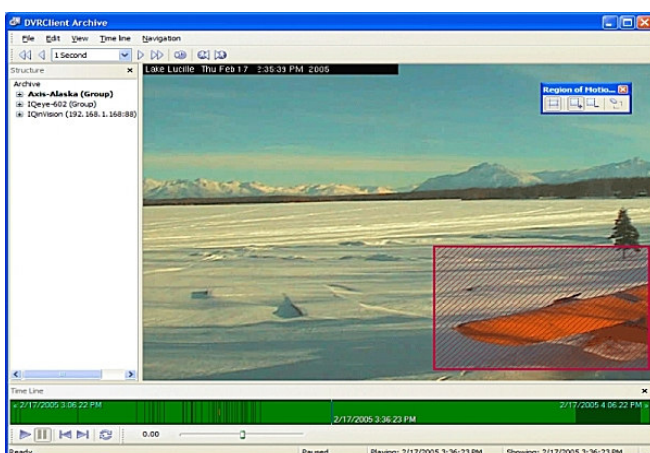
Features:

- **Multitude of supported hardware**
- **Effective support for and close integration with megapixel cameras**
- **390+ IP cameras model supported, inclusive Arecont Vision, Axis, SONY, Panasonic and Vivotek**
- **Multiple screen configuration options.**
- **Motion recording with support to on-board motion detection analytic.**
- **Remote connection** via Internet and/or LAN. Server can be accessed from any part of the world for remote monitoring, video playback, user management and more...
- **Real-time playback** without interrupting recording.
- Support GSF™ High Definition CCTV Solutions, and high resolutions megapixels cameras
- **User Management** controls access to cameras and program features. Depending on user status, s/he can be either allowed or denied to perform the following operations: access archive, administer server, connect locally and connect remotely
- **Support unlimited number of cameras** (hardware limitations may apply). LX series imposes no limits on how many cameras can be connected to a server
- **Multiple clients can be connected to a single server**, client applications may access the server to receive live and recorded video, as well as perform other operations
- **Each camera is individually configurable**, including: recording, motion detection, image adjustments (brightness, contrast, sharpness, hue, saturation) and more
- **Support massive 8 Terabytes (TB) of dedicated video storage, configurable in RAID5**

Unique features:

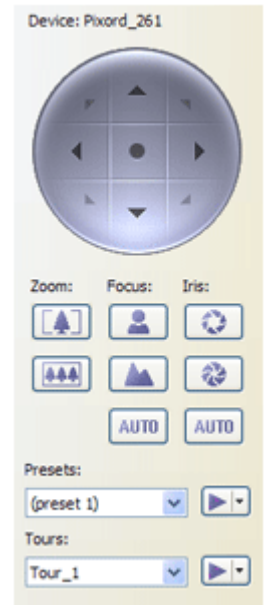


- **Supports unlimited number of cameras** (hardware limitations may apply). The enterprise edition imposes no limits on how many cameras can be connected to a server. Although hardware performance cap (mostly CPU performance and network bandwidth) may limit maximum number of cameras to several hundred cameras, however, time will void these limitations as computer hardware efficiency grows.
- **Efficient CPU usage.** If used along with the Network (IP) cameras and Network Video Servers the server will not use the CPU to compress video; this means that CPU usage will be low enough to avoid the interference with other software applications running on the same computer.
- **Fully-featured Client application** – all functions, without exceptions may be accessed both locally and remotely (only one user interface). Anyone operating the client application can connect to the server, access live and recorded video, change settings, etc. in accordance with granted user rights
- **Server can run as a Windows service.** This feature allows running LuxRiot server stay virtually unnoticed. Also the server can run without user logging into Windows, so the security of the system is not compromised
- **Full featured local and remote playback** with search on motion and areas of motion
- **Support for the standard DirectShow devices.** The list of these devices includes everything from very basic USB cameras and camcorders to advanced multichannel video capture boards.
- **Screen can be configured for wide-screen HDTV monitor.**
- **Supports all major brands of Network (IP) cameras and Network Servers.** The list of supported IP cameras is growing rapidly and an addition of not yet supported camera may be expedited upon request
- **Map Camera Layouts**
- **Network Camera Search Wizard.** Using this Wizard a user is able to find all available Network (IP) cameras, configure them and connect them in no time and with little effort.
- Client database with connections and settings that can be exported and open on any computer running LuxRiot (configure one client with all connections and import database to unlimited computers)
- **Advance server recording setting can be configured locally or remotely.**
- **Disk analysis** screen display for improved recorded data analysis
- Layouts: **Create custom Layouts** by grouping cameras from different DVR Servers/Locations into groups for more efficient monitoring, and better management. Drag and drop cameras from a server or multiple servers to custom layouts.
- Software watchdog: Advance Watchdog Operations, Programmable with maintenance settings. Watchdog can be configured to periodically restart server services to clear any possible problems which could deteriorate server system performance, (select different time frames (days, hours..etc), Adjust auto settings for error control and advance detection for problem detection and recovery.
- **Can map network drive (NAS, iSCSI),** and support to multiple video storage drives
- Client configuration (screen layout, connection to servers, etc) is registered file type, so it is possible to store different configuration on one computer, email them or export them as database and open them on any computer with the client.
- **Multiple screen configuration** options. You can choose from 1 screen view, 4, 9, 16, 25 or 36 equal screen views. Other options include custom views, where as one or two screens are larger than the others.
- **Real-time playback** without interrupting the recording cycle any camera can be played back using the local or remote Client application software. Such playback will not interrupt ongoing video recordings, nor will the quality of the recordings be compromised



Advanced Surveillance Features:

- **User-friendly wizards** make LuxRiot easy to use and configure. All commonly used operations, such as adding access to a new Server from Client application, searching for Network (IP) cameras, user management, etc. can all be performed via intuitive wizards. This helps make very advanced features accessible to an average computer user.
- **User Management** controls access to cameras and program features. Depending on user status, s/he can be either allowed or denied to perform the following operations: access archive, administer server, connect locally and connect remotely.
- **Control PTZ cameras.** Pan, tilt and zoom cameras can be fully controlled from within the Client application.
- **Multiple clients can be connected to a single server.** Depending on edition and user management settings, 1 to unlimited number of local and remote client applications may access the server to receive live and recorder video, as well as perform other operations.
- **Client can be connected to multiple servers simultaneously.** A client application user, if granted sufficient privileges, can connect to unlimited number of servers to view live or recorded video as well as perform other operations.
- **Each camera is individually configurable,** including: recording, motion detection, image adjustments (brightness, contrast, sharpness, hue, saturation) and more



Specifications:

NVR Server & Client Software unlimited* cameras connection. * Hardware limitation apply. Configured in server mode (no display clients). Recommended spec in one NVR Server:

IP Video:	25CH High-Def IP video, or 64CH VGA IP Video Resolutions: up to 8Mpix	Export:	Image export (JPEG) Video export (.avi) Snap shot
Analog Video:	FPGA-Based Video Capture Board 200FPS/card instantly available and, non disruptive acquisition method. 16CH inputs/card, max 4 Cards (64CH) Resolutions: D1 (704x576) max	Backup:	Raw video storage can be backup to external media and can be view using Removable Media Player
Recording:	Continuous (24/7) Motion recording	User Account:	Multi user rights and password restriction.
Playback:	Regular playback Smart search feature	Ethernet:	Dual 10/100/1000 Base-T
Remote client:	Remote view with full featured client Remote playback with client IE browser view/playback	Video Storage:	Half to 3 Terabytes (TB), or 8 Terabytes (TB) with HW/Raid
		Dimension:	3U Rack mount server chassis 660(D) x430(W) x 132(H) mm

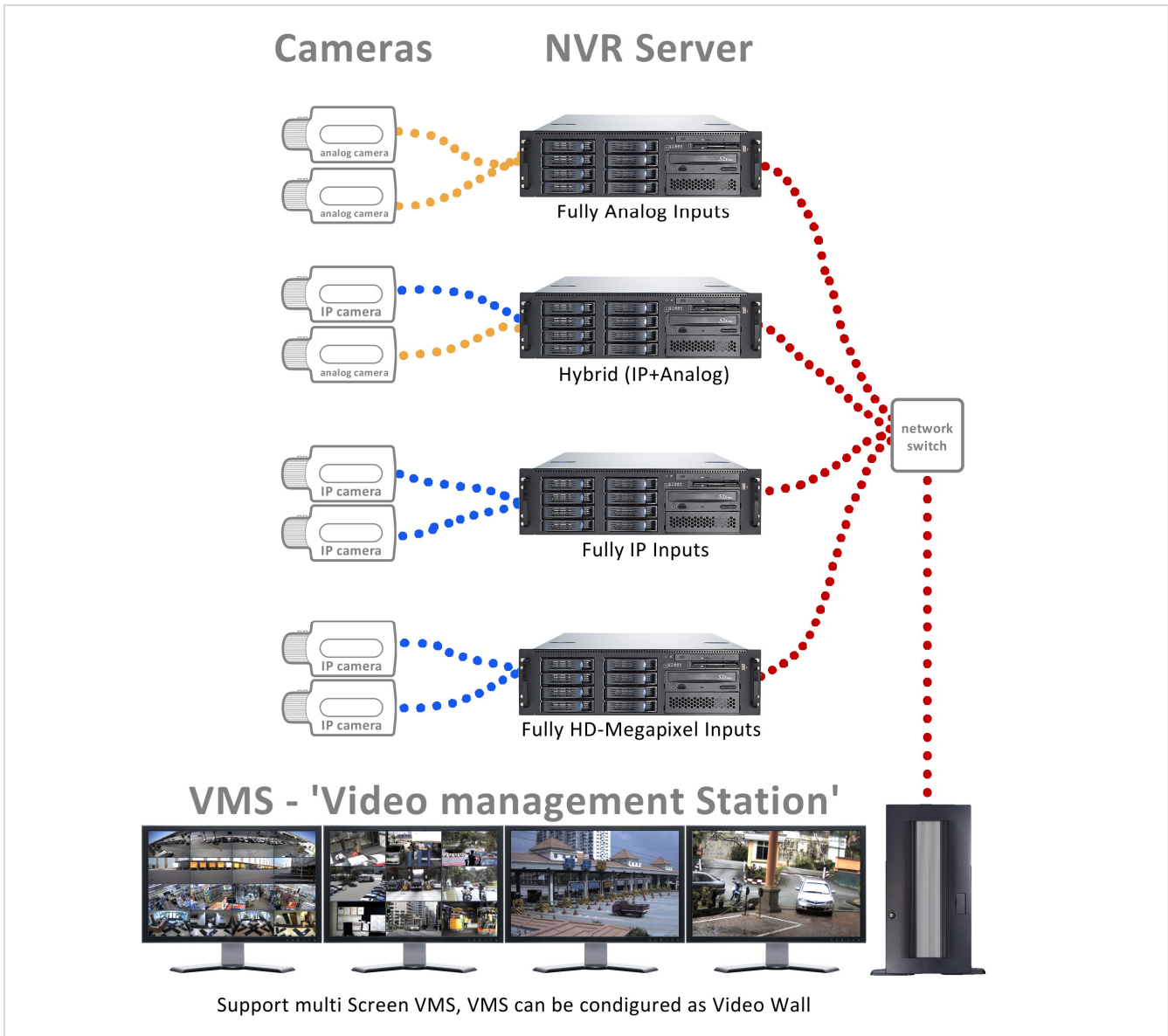
Available Models: RMC-LX**XXYY**-ZZ

XX: 16, 32, 48, 64CH Analog Video

YY: 25CH, 64CH IP Cameras License

ZZ: 500GB, 1-8TB Dedicated Video Storage

System Diagram



Supported Brand, IP Cameras / Network Video Server:

Details Model, please visit <http://gsf.com.my/dvr/luxriot-supportedhardware.htm>

4XEM	Acti	AitLink101	Arecont Vision	Appro	Aviosys	Vcenter
Axis	Basler	Bolide	Bosch	Canon	CBC	Costa
Hiltron	D-Link	Dynacolor	ELMO	FlexWATCH	GANZ	Indinova
Intellinet	IQinVIsion	I-Yahorng	JVC	LevelOne	Linksys	Linudix
Lumenera	Merit Li-Lin	Mobotix	Micronet	O'RITE	Panasonic	Pixord
Pelco	Provideo	Rimax	Sanyo	Samsung	SONY	SparkLAN
StarDot	Toshiba	Trendnet	Veo	Vivotek	Y-cam	Zavio