



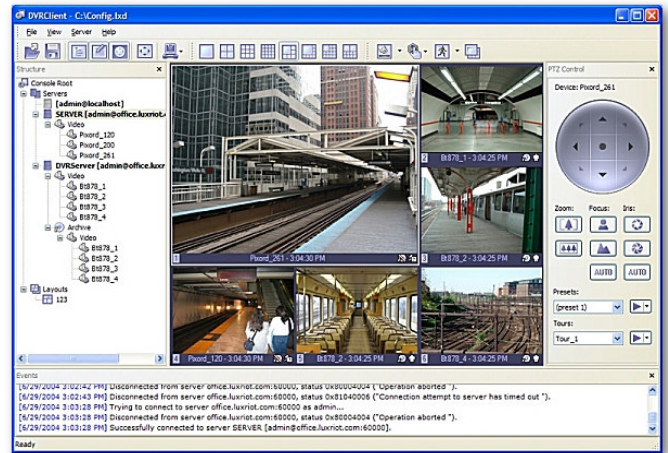
EX Series Entry Level NVR Server

Highly Scalable Network Surveillance System

Support multi brand IP cameras, and HD (megapixel) cameras

Product Description:

The Enterprise Series NVR Server is an advanced security solution that integrates with over 390+ IP cameras from 45 manufacturers on a single 4U rack mount system, including support to megapixels and GSF High Definition CCTV Solutions. Fully featured client application offer all functions, without exceptions may be administered both locally and remotely (only one user interface). Each server can connect to multiple remote clients (VMS) and every VMS can connect any servers, any cameras. SX Series NVR Server powered by LuxRiot.



HIGH DEFINITION
CCTV
SOLUTIONS

Features:

- **Effective support for and close integration with megapixel cameras**
- **390+ IP cameras model supported, inclusive Arecont Vision, Axis, SONY, Panasonic and Vivotek**
- **Multiple screen configuration options.**
- **Motion recording with support to on-board motion detection analytic.**
- **Remote connection** via Internet and/or LAN. Server can be accessed from any part of the world for remote monitoring, video playback, user management and more...
- **Real-time playback** without interrupting recording.
- Support GSF™ High Definition CCTV Solutions, and high resolutions megapixels cameras
- **User Management** controls access to cameras and program features. Depending on user status, s/he can be either allowed or denied to perform the following operations: access archive, administer server, connect locally and connect remotely
- **Multiple clients can be connected to a single server**, client applications may access the server to receive live and recorded video, as well as perform other operations
- Can map network drive (NAS, iSCSI), and support to multiple video storage drives
- **Server can run as a Windows service.** This feature allows running LuxRiot server stay virtually unnoticed. Also the server can run without user logging into Windows, so the security of the system is not compromised
- **Each camera is individually configurable**, including: recording, motion detection, image adjustments (brightness, contrast, sharpness, hue, saturation) and more
- **Support 4.5 Terabytes (TB) of dedicated video storage, configurable in RAID5**

Supported Brand, IP Cameras / Network Video Server:

Details Model, please visit <http://gsf.com.my/dvr/luxriot-supportedhardware.htm>

4XEM	Acti	AitLink101	Arecont Vision	Appro	Aviosys	Vcenter
Axis	Basler	Bolide	Bosch	Canon	CBC	Costa
Hiltron	D-Link	Dynacolor	ELMO	FlexWATCH	GANZ	Indinova
Intellinet	IQinVIsion	I-Yahorng	JVC	LevelOne	Linksys	Linudix
Lumenera	Merit Li-Lin	Mobotix	Micronet	O'RITE	Panasonic	Pixord
Pelco	Provideo	Rimax	Sanyo	Samsung	SONY	SparkLAN
StarDot	Toshiba	Trendnet	Veo	Vivotek	Y-cam	Zavio

Specifications:

SM model configured in server mode only (for recording and video management purpose only)

SC model configured in server+client (capability to view upto 16CH HD display)

IP Video:	09CH High-Def IP video, or 16CH VGA IP Video Resolutions: up to 8Mpix	Export:	Image export (JPEG) Video export (.avi) Snap shot
Recording:	Continuous (24/7) Motion recording	Backup:	Raw video storage can be backup to external media and can be view using Removable Media Player
Playback:	Regular playback Smart Search mode	User Account:	Multi user rights and password restriction.
Remote client:	Remote view with full featured client Remote playback with client IE browser view	Ethernet:	Single 10/100/1000 Base-T
Display: (SC Model)	AGP display module for server with client display.	Video Storage:	Half to 4.5 Terabytes (TB)
		Dimension:	4U Rack mount server chassis 482(W) x 480(D) x 178(H) mm

Available Models: RMC-EX**AA**YY-ZZ
AA: SM (Server mode only) ;
 SC (with client display capability)
YY: 09CH, or 16CH IP Cameras License
ZZ: 500GB, 1-4.5TB Dedicated Video Storage