

Keep An Eye On Your World!

With the Vevo Observer One, you can now see and hear what's happening when you're not there! Accessing the camera is as easy as surfing the web. Simply type in the camera's custom web address and access the on-board web page. Easily view and listen to the scene with features like audio monitoring, digital zoom, 120° pan, 60° tilt, and motion detection...all through Microsoft Internet Explorer. Or operate the camera on your LAN and bypass the internet completely, for a connection that's as secure as your network! The Vevo Observer provides total peace of mind by being there when you can't be.

VGA CCD Sensor
For crisp images

Built-In Pan and Tilt
Follow the action wherever it goes

Built-In Microphone
Hear what's going on

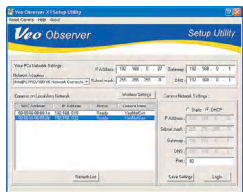
On-Off Button and Status Indicator
Blinks to let you know that someone is accessing the camera

IP Address Display
Makes set up and access a snap

Adjustable Mounting
Lets you mount the camera where you want

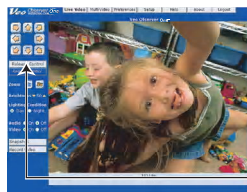
Connections (Rear View)

1. **Serial Port Connector**
For future use with optional add-on devices
2. **Ethernet Status LED**
Lets you know you're connected
3. **RJ-45 Ethernet Connector**
Plugs into your home or office network
4. **External Power**
5. **Motion Sensor Jack***
Use the sensor to trigger an email with image attached!



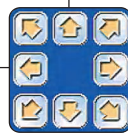
Easy Setup

No need to worry about complex network setup procedures. The Vevo Wireless Observer One comes with its own easy to use camera setup utility!

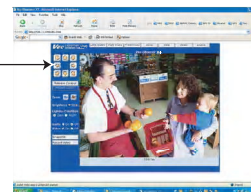


Capture The Moment

Never miss another birthday or holiday because you can't be there. The included software lets you capture the moment with snapshots, sound and video clips... so you can watch it again and again.



Easily control the camera's pan and tilt feature over the Internet with Microsoft Internet Explorer.



Remote Monitoring

Keep track of loved ones, belongings, and business affairs from anywhere in the world by simply logging on to the camera's built-in webpage via Internet Explorer.



Simultaneous Viewing

Monitor up to four locations at the same time.

Specifications

CCD Sensor	VGA Resolution (640 x 480)
Sensitivity	1 Lux
Connection	RJ-45/ Ethernet - IP Addressed (No PC Connection Required)
Pan / Tilt	120°/ 60° operated via Internet Explorer™
Microphone	Built-in Microphone
Resolutions	640 x 480, 320 x 240, 160 x 120
Frame Rate	160x120, 320x240 -- Up to 30fps 640x480 -- Up to 15fps
Multiple Users	Support 1 user
Image Format	
Video Capture	AVI
Still Photos	JPEG
Color Depth	24 bit color
Exposure Controls	Auto exposure, gain, and white balance
Lens	F/2.0, 5 Element Glass, Fixed Focus
LCD Display	IP Address Readout (Quick & Easy Set-up!)
Motion Detection	Input jack for optional PIR motion detector hookup
I/O	1 input, 1 output
Power Supply	5 Volt DC (AC adapter included)
Accessories	Wall mounting bracket Standard 1/4" Tripod Socket

Minimum Requirements

Network	Available RJ-45 Connection (Open port on Router, Gateway or Hub)
Power	110/220V, 50/60 Hz standard outlet
Internet Connection	Broadband connection (minimum 128k upload)
Browser	Internet Explorer® 6.0 or higher for Windows
PC Software	Microsoft® Windows® 98, Me, 2000, or XP 300 MHz Intel® Pentium® II or better 64 MB RAM or better 5 MB available hard drive space 800 x 600 display monitor with 16 bit color CD-ROM/DVD drive
Audio Monitoring	Sound card and speakers

Support

Documentation	Quick Reference Guide, Extensive Electronic User Guide
Support & Warranty	1-Year Limited Hardware Warranty (For complete warranty information, visit the Vevo web site at www.vevo.com/warranty)

Import & Distribute by:

GSF Solutions Sdn Bhd

No.7, Jalan Awan Selimpat, Taman Yarl,
58200 Kuala Lumpur, Malaysia
Tel / Fax: +60379805037 Email: info@gsf.com.my



Keep An Eye On Your World...Without Wires!

See and hear what's happening throughout your Wireless Network, without being there! The Vevo Wireless Observer works over any standard WiFi (802.11b) Network, so now you can be anywhere and still keep your eyes and ears on the office, your home or anywhere with a wireless connection! Simply type in the camera's web address and access the on-board web page to easily view and listen to the scene. Advanced features like audio monitoring, digital zoom, 120° pan, 60° tilt, and motion detection can all be accessed through Microsoft Internet Explorer or the camera's custom software. The Vevo Wireless Observer One provides total piece of mind by being there when you can't be.

External Antenna
Extend the range of your wireless connection

Built-In Pan and Tilt
Follow the action wherever it goes

VGA CCD Sensor
For crisp images

Built-In Microphone
Hear what's going on

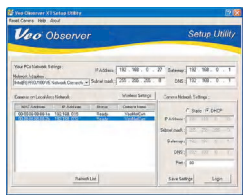
On-Off Button and Status Indicator
Blinks to let you know that someone is accessing the camera

IP Address Display
Makes set up and access a snap

Adjustable Mounting
Lets you mount the camera where you want

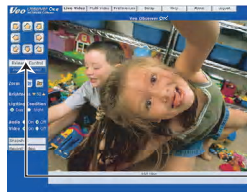
Connections (Rear View)

- 1. Serial Port Connector**
For future use with optional add-on devices
- 2. Ethernet Status LED**
Lets you know you're connected
- 3. RJ-45 Ethernet Connector**
Configure your camera's wireless settings
- 4. External Power**
- 5. Motion Sensor Jack***
Use the sensor to trigger an email with image attached!



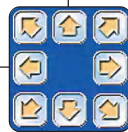
Easy Setup

No need to worry about complex network setup procedures. The Vevo Wireless Observer One comes with its own easy to use camera setup utility!

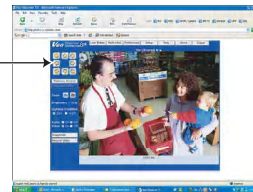


Capture The Moment

Never miss another birthday or holiday because you can't be there. The included software lets you capture the moment with snapshots, sound and video clips... so you can watch it again and again.



Easily control the camera's pan and tilt feature over the Internet with Microsoft Internet Explorer.



Remote Monitoring

Keep track of loved ones, belongings, and business affairs from anywhere in the world by simply logging on to the camera's built-in webpage via Internet Explorer.



Simultaneous Viewing

Monitor up to four locations at the same time.

Specifications

CCD Sensor	VGA Resolution (640 x 480)
Sensitivity	1 Lux
Connection	802.11b Wireless Ethernet (WiFi Compatible) RJ-45/ Ethernet - IP Addressed (No PC Connection Required)
Pan / Tilt	120°/ 60° operated via Internet Explorer™
Microphone	Built-in Microphone
Resolutions	640 x 480, 320 x 240, 160 x 120
Frame Rate	160x120, 320x240 -- Up to 30fps 640x480 -- Up to 15fps
Multiple Users	Support 1 user
Image Format	Video Capture AVI (MS IMA ADPCM, MJPEG) Still Photos JPEG
Color Depth	24 bit color
Exposure Controls	Auto exposure, gain, and white balance
Lens	F/2.0, 5 Element Glass, Fixed Focus
LCD Display	IP Address Readout (Quick & Easy Set-up!)
Motion Detection	Input jack for optional PIR motion detector hookup
I/O	1 input, 1 output
Power Supply	5 Volt DC (AC adapter included)
Accessories	Wall mounting bracket Standard 1/4" Tripod Socket

Wireless Connection

Connection modes	Infrastructure or Adhoc
Range	Up to 300 ft (open environment)
Encryption	WEP 64 or 128 bit
Frequency	2.4 GHz Direct Sequence Spread Spectrum (DSSS)
Channels	1-11 (N.America), 1-14 (Japan), 1-13 (Europe, ETSI)

Minimum Requirements

Network	802.11b wireless router or access point
Power	110/220V, 50/60 Hz standard outlet
Internet Connection	Broadband connection (minimum 128k upload)
Browser	Internet Explorer® 6.0 or higher for Windows
PC Software	Microsoft® Windows® 98, Me, 2000, or XP 300 MHz Intel® Pentium® II or better 64 MB RAM or better 5 MB available hard drive space 800 x 600 display monitor with 16 bit color CD-ROM/DVD drive
Audio Monitoring	Sound card and speakers

Support

Documentation	Quick Reference Guide, Extensive Electronic User Guide
Support & Warranty	1-Year Limited Hardware Warranty (For complete warranty information, visit the Vevo web site at www.vevo.com/warranty)

Security At Your Fingertips!

Plug the Observer XT into your network and you're ready to see and hear what's happening when you're not there! Accessing the camera is as simple as surfing the web, just point your browser to the camera's onboard web page. You'll find everything you need to view, listen to, and control the camera from anywhere on your network or even over the Internet!

Total peace of mind when you're away!

VGA CCD Sensor
For crisp images

Built-In Pan and Tilt
Follow the action wherever it goes

Built-In Microphone
Hear what's going on

On-Off Button and Status Indicator
Blinks to let you know that someone is accessing the camera

IP Address Display
Makes set up and access a snap

Adjustable Mounting
Lets you mount the camera where you want

Connections (Rear View)

- Serial Port Connector**
For future use with optional add-on devices
- Ethernet Status LED**
Lets you know you're connected
- RJ-45 Ethernet Connector**
Plugs into your home or office network
- External Power**
- Motion Sensor Jack***
Use the sensor to trigger an email with image attached!



Easy Setup

No need to worry about complex network setup procedures. The Vevo Wireless Observer XT comes with its own easy to use camera setup utility!



Capture The Moment

Never miss another birthday or holiday because you can't be there. The included software lets you capture the moment with snapshots, sound and video clips... so you can watch it again and again.



Easily control the camera's pan and tilt feature over the Internet with Microsoft Internet Explorer.



Remote Monitoring

Keep track of loved ones, belongings, and business affairs from anywhere in the world by simply logging on to the camera's built-in webpage via Internet Explorer.



Simultaneous Viewing

Monitor up to four locations at the same time.

Specifications

CCD Sensor	VGA Resolution (640 x 480)
Sensitivity	1 Lux
Connection	RJ-45/ Ethernet - IP Addressed (No PC Connection Required)
Pan / Tilt	120°/ 60° operated via Internet Explorer™
Microphone	Built-in Microphone
Resolutions	640 x 480, 320 x 240, 160 x 120
Frame Rate	160x120, 320x240 -- Up to 30fps 640x480 -- Up to 15fps
Multiple Users	Support up to 10 simultaneous users
Image Format	
Video Capture	AVI
Still Photos	JPEG
Color Depth	24 bit color
Exposure Controls	Auto exposure, gain, and white balance
Lens	F/2.0, 5 Element Glass, Fixed Focus
LCD Display	IP Address Readout (Quick & Easy Set-up!)
Motion Detection	Input jack for optional PIR motion detector hookup
I/O	1 input, 1 output
Power Supply	5 Volt DC (AC adapter included)
Accessories	Wall mounting bracket Standard 1/4" Tripod Socket

Minimum Requirements

Network	Available RJ-45 Connection (Open port on Router, Gateway or Hub)
Power	110/220V, 50/60 Hz standard outlet
Internet Connection	Broadband connection (minimum 128k upload)
Browser	Internet Explorer® 6.0 or higher for Windows
PC Software	Microsoft® Windows® 98, Me, 2000, or XP 300 MHz Intel® Pentium® II or better 64 MB RAM or better 5 MB available hard drive space 800 x 600 display monitor with 16 bit color CD-ROM/DVD drive
Audio Monitoring	Sound card and speakers

Support

Documentation	Quick Reference Guide, Extensive Electronic User Guide
Support & Warranty	1-Year Limited Hardware Warranty (For complete warranty information, visit the Vevo web site at www.vevo.com/warranty)

Import & Distribute by:

GSF Solutions Sdn Bhd

No.7, Jalan Awan Selimpat, Taman Yarl,
58200 Kuala Lumpur, Malaysia
Tel / Fax: +60379805037 Email: info@gsf.com.my

Security At Your Fingertips!

Add the Wireless Observer XT to your network and you're ready to see and hear what's happening when you're not there! Accessing the camera is as simple as surfing the web, just point your browser to the camera's onboard web page. You'll find everything you need to view, listen to, and control the camera from anywhere on your network or even over the Internet!

Total peace of mind when you're away!

External Antenna
Extend the range of your wireless connection

Built-In Pan and Tilt
Follow the action wherever it goes

VGA CCD Sensor
For crisp images

Built-In Microphone
Hear what's going on

On-Off Button and Status Indicator
Blinks to let you know that someone is accessing the camera

IP Address Display
Makes set up and access a snap

Adjustable Mounting
Lets you mount the camera where you want

Connections (Rear View)

1. **Serial Port Connector**
For future use with optional add-on devices
2. **Ethernet Status LED**
Lets you know you're connected
3. **RJ-45 Ethernet Connector**
Configure your camera's wireless settings
4. **External Power**
5. **Motion Sensor Jack***
Use the sensor to trigger an email with image attached!



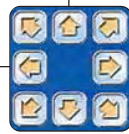
Easy Setup

No need to worry about complex network setup procedures. The Vevo Wireless Observer XT comes with its own easy to use camera setup utility!

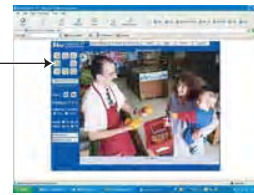


Capture The Moment

Never miss another birthday or holiday because you can't be there. The included software lets you capture the moment with snapshots, sound and video clips... so you can watch it again and again.



Easily control the camera's pan and tilt feature over the Internet with Microsoft Internet Explorer.



Remote Monitoring

Keep track of loved ones, belongings, and business affairs from anywhere in the world by simply logging on to the camera's built-in webpage via Internet Explorer.



Simultaneous Viewing

Monitor up to four locations at the same time.

Specifications

CCD Sensor	VGA Resolution (640 x 480)
Sensitivity	1 Lux
Connection	802.11b Wireless Ethernet (WiFi Compatible) RJ-45/ Ethernet - IP Addressed (No PC Connection Required)
Pan / Tilt	120°/ 60° operated via Internet Explorer™
Microphone	Built-in Microphone
Resolutions	640 x 480, 320 x 240, 160 x 120
Frame Rate	160x120, 320x240 -- Up to 30fps 640x480 -- Up to 15fps
Multiple Users	Support up to 10 simultaneous users
Image Format	Video Capture AVI (MS IMA ADPCM, MJPEG) Still Photos JPEG
Color Depth	24 bit color
Exposure Controls	Auto exposure, gain, and white balance
Lens	F/2.0, 5 Element Glass, Fixed Focus
LCD Display	IP Address Readout (Quick & Easy Set-up!)
Motion Detection	Input jack for optional PIR motion detector hookup
I/O	1 input, 1 output
Power Supply	5 Volt DC (AC adapter included)
Accessories	Wall mounting bracket Standard 1/4" Tripod Socket

Wireless Connection

Connection modes	Infrastructure or Adhoc
Range	Up to 300 ft (open environment)
Encryption	WEP 64 or 128 bit
Frequency	2.4 GHz Direct Sequence Spread Spectrum (DSSS)
Channels	1-11 (N.America), 1-14 (Japan), 1-13 (Europe, ETSI)

Minimum Requirements

Network	802.11b wireless router or access point
Power	110/220V, 50/60 Hz standard outlet
Internet Connection	Broadband connection (minimum 128k upload)
Browser	Internet Explorer® 6.0 or higher for Windows
PC Software	Microsoft® Windows® 98, Me, 2000, or XP 300 MHz Intel® Pentium® II or better 64 MB RAM or better 5 MB available hard drive space 800 x 600 display monitor with 16 bit color CD-ROM/DVD drive
Audio Monitoring	Sound card and speakers

Support

Documentation	Quick Reference Guide, Extensive Electronic User Guide
Support & Warranty	1-Year Limited Hardware Warranty (For complete warranty information, visit the Vevo web site at www.vevo.com/warranty)