

# High Definition CCTV Solutions

Unparalleled Clarity at Unbeatable Price

*A Proposal to:*

*To Whom It May Concern*

*(Web Edition)*

# About GSF

GSF Solutions Sdn Bhd (733346-X) is a network surveillance solutions provider. We provide high definition CCTV solutions. Through the application of High Definition (HD) Video technologies, our focus is to provide video surveillance systems that transcend the capabilities of today's CCTV products. Thus, existing CCTV systems can be enhanced by dramatically improved image quality.

We are the authorized distributor for LuxRiot NVR software and Arecont Vision Megapixel IP camera from USA.



Company address:  
No.7, Jalan Awan Selimpat,  
Off Old Klang Road, Taman Yarl,  
58200 Kuala Lumpur, Malaysia.

Tel: +603 7980 5037  
Fax: +603 7981 5187

Email: [info@gsf.com.my](mailto:info@gsf.com.my)  
Web: <http://www.gsf.com.my>

## Products & Services

### High Definition CCTV Solutions

We provide HDCCTV solutions in design and system supply.

- Luxriot NVR Software
- GSFdvr™ Luxriot Series NVR Server with forensic zooming
- ArecontVision MegaVideo™ IP camera series

### DVR/NVR Systems Solutions

We provide computer based network video recording system or DVR/NVR.

- NVR software
- ready-to-run NVR/DVR system
- Customized DVR/NVR system as per your design requirement.

### IP Cameras

We supply IP Cameras and video servers.

- Mega pixel POE IP Cameras ( up to 5MP, and Day/Night function)
- 360° / 180° Mega pixel POE IP Cameras
- Video server (transform existing analog camera to IP based camera)
- Others: PTZ IP based camera with POE function.
- Others: Miscellaneous IP cameras.

## Conventional PAL CCTV vs. HDCCTV



PAL DVR image. Quality camera with Fujion F0.95 lens. Recorded at 704x576



ArecontVision 3megapix camera with Tamron F1.4 lens. Recorded at 2044x1536

## Benefits of HDCCTV

High Definition imaging deliver crisp, clear details, with maximum field of view. The recorded HD images in archive significantly increase the forensic and evidentiary value of video surveillance.

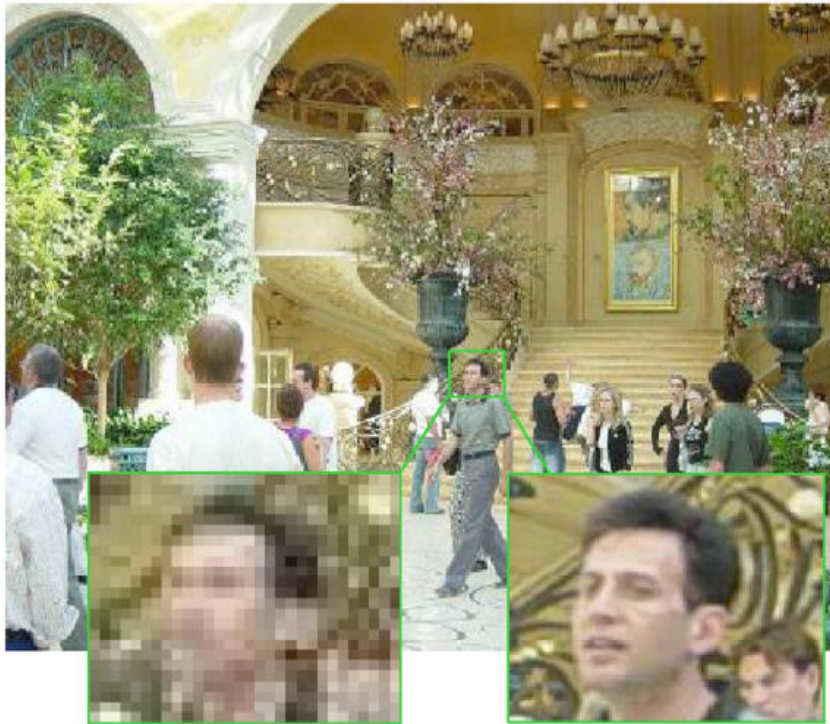
**Maximum field of view** - increased the areas to be captured.

Due to maximum areas are covered in the megapixels camera, less cameras in total are needed for the whole project. For Example, a 3-Megapixel camera can substitute up to 9 conventional cameras . When less cameras needed, the cost of installation such as storage, cabling, cameras housing cost will be lower with a megapixel based system.

**Superior quality of forensics and evidentiary video.**

Recorded video are stored in high resolution format, the details like car plate number and human faces can be recognised.

## The Problem - Present PAL CCTV Imaging



Conventional  
PAL CCTV

High Definition  
CCTV System



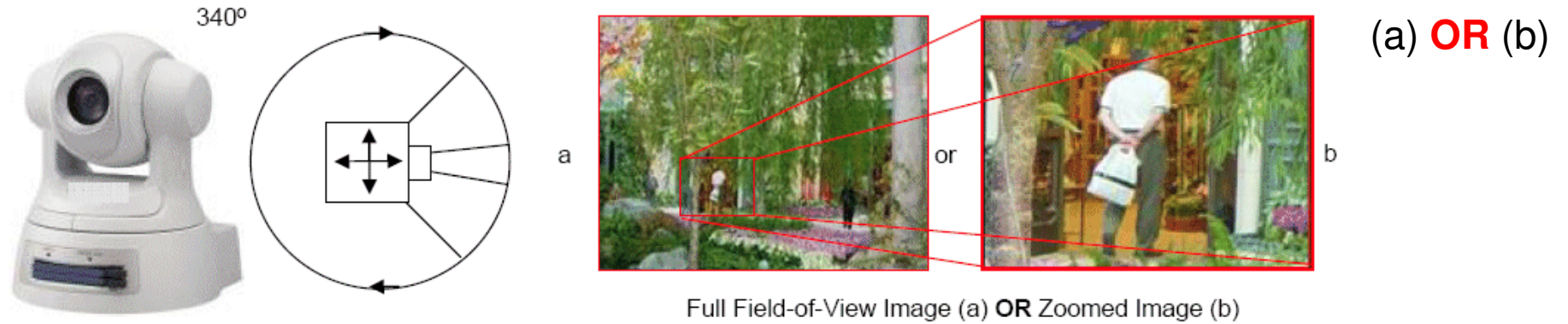
Conventional  
PAL CCTV

High Definition  
CCTV System

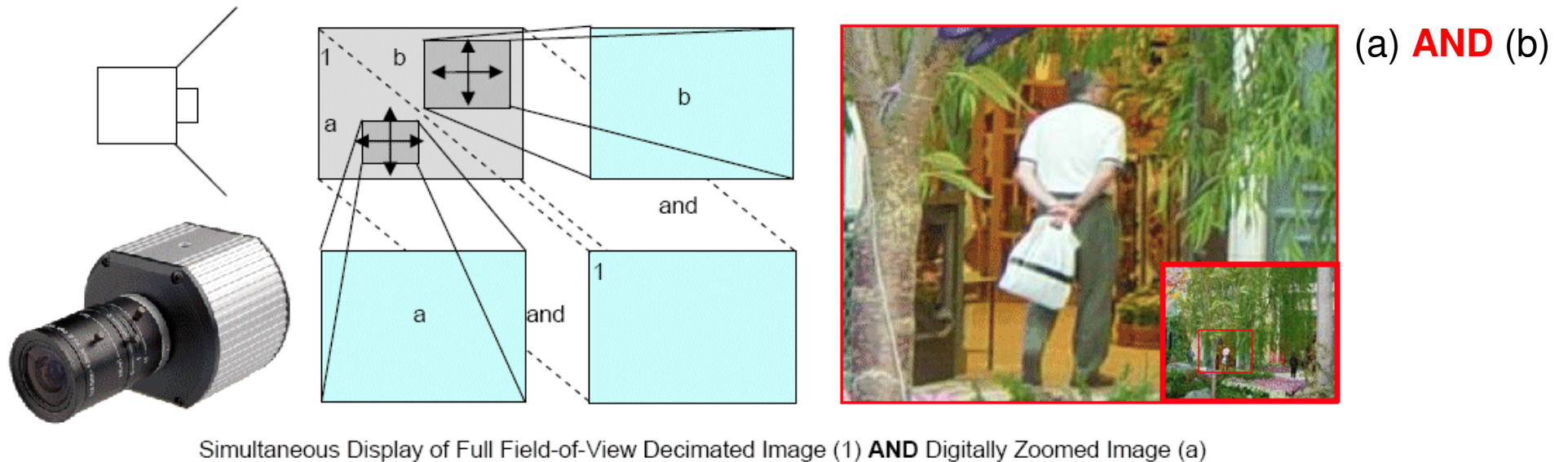
Conventional CCTV surveillance is still based on low-resolution cameras on analog standard. High definition CCTV is based on very high-resolution that display million of pixels. The more pixels there are, the smoother and sharper the image details.

# Difference between Mechanical & Digital Pan, Tilt, Zoom (PTZ)

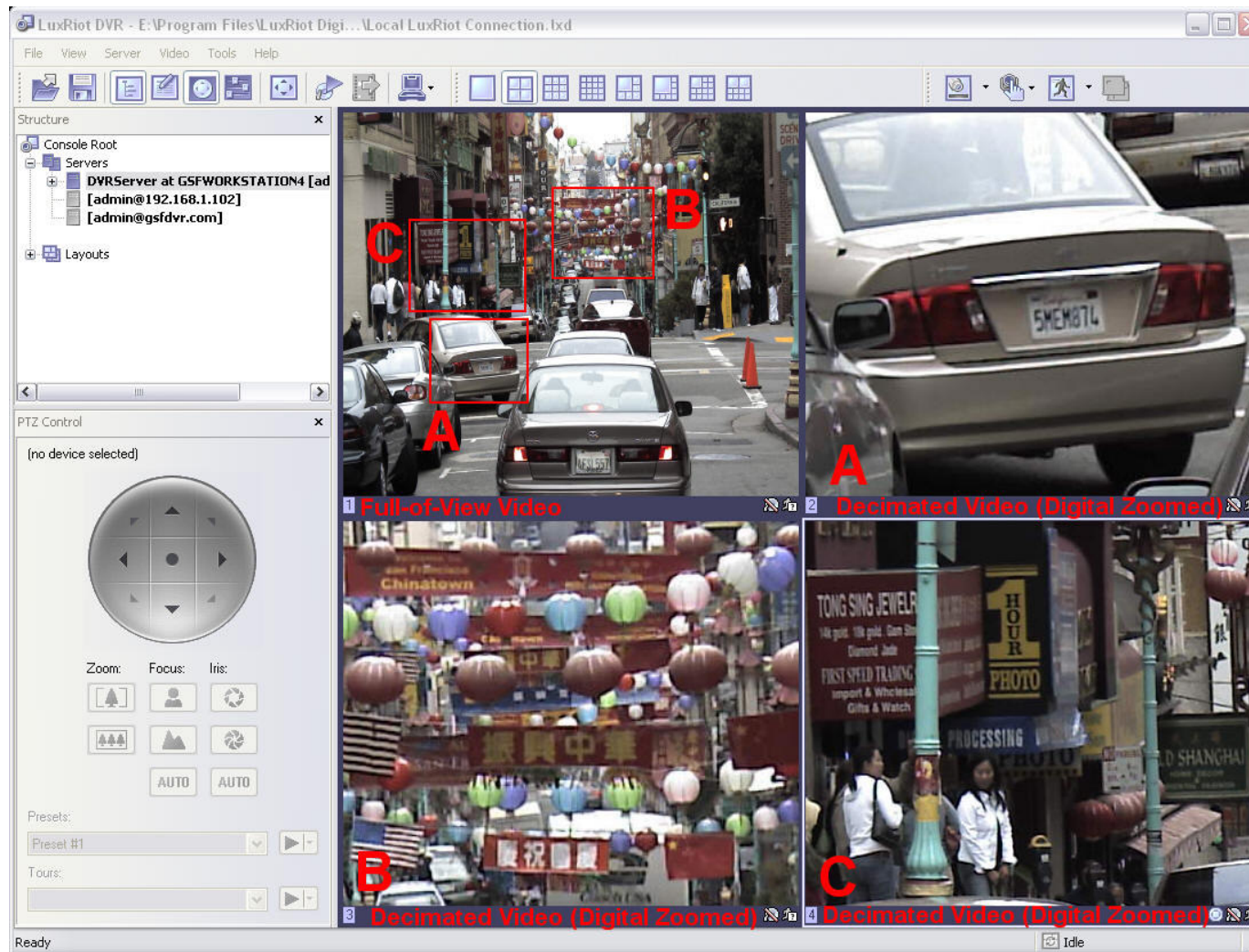
## Mechanical Pan, Tilt & Optical Zoom Camera



## Digital PTZ Megapixel Network Camera



# Forensic Zooming



HDCCTV Solutions consist of two major products. Luxriot NVR Software and ArecontVision Mega Pixel IP Camera. With flexible multi video viewing on Luxriot, you can set simultaneously display of Full-of-View video with multiple Decimated (digital zoomed) video in one screen. In HDCCTV, all video are recorded in full-of-view mega pixel resolutions, so that you can (digital) zoom-in after event in recorded video archive.

# SurroundVideo™ Panoramic Surveillance



ArecontVision AV8180 180° 8 Megapixel POE IP-Camera for indoor & outdoor (with outdoor dome housing)



ArecontVision AV8360 360° 8 Megapixel POE IP-Camera for indoor & outdoor (with outdoor dome housing)

# Reduced Total System Cost

## Reduced cameras to install

- A 3MegaPixel camera can replace up to 9 conventional PAL cameras
- Reduce camera mounts, wiring, lenses, enclosures installations

## Reduced wiring cost

- Ethernet is less expensive than Coax

## No External Power

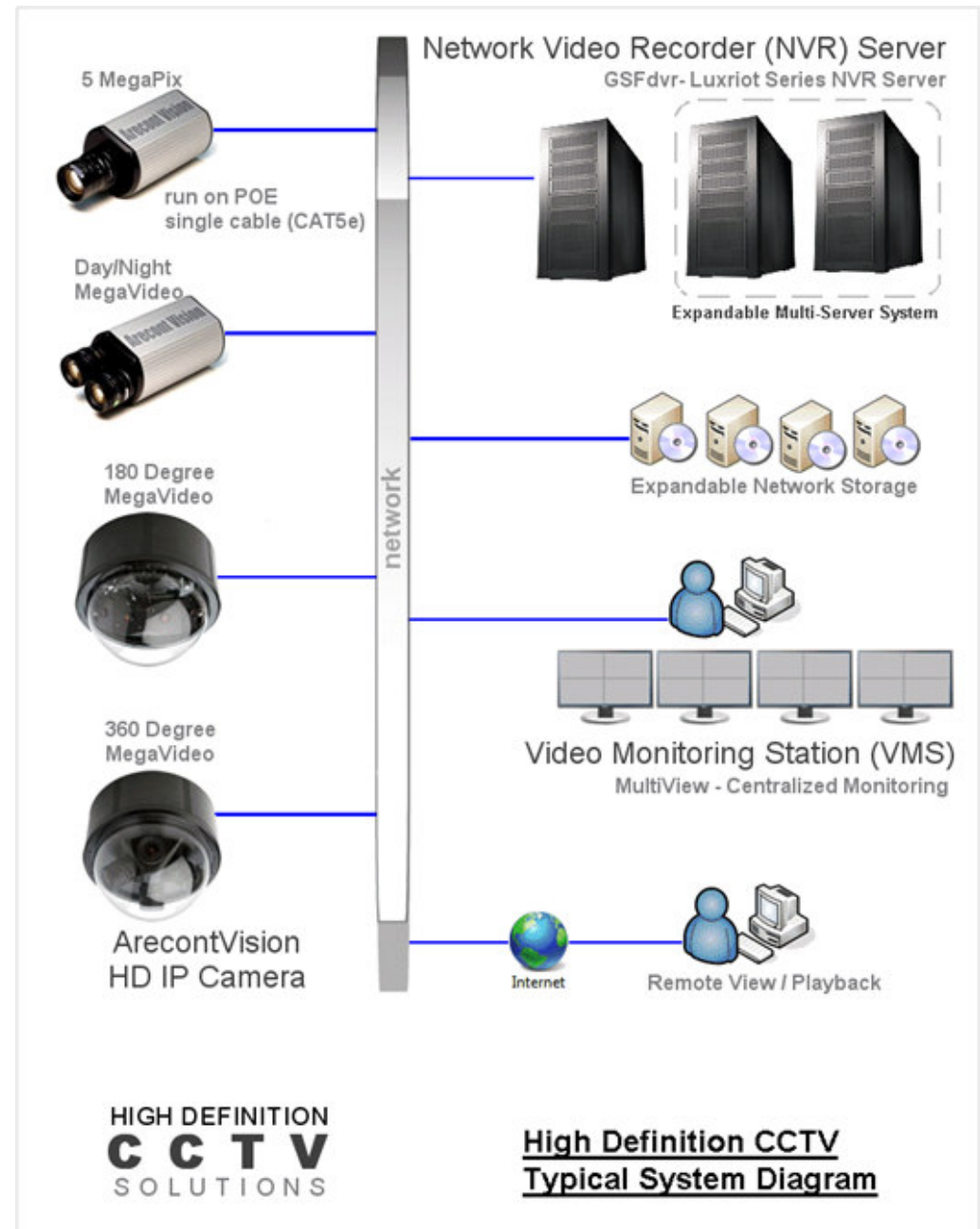
- Cameras are powered via “Switch” with Powered-Over-Ethernet (IEEE802.3AF)

## Easily Expanded

- Plug additional cameras into the network switch

## Simplicity

- Simple Installation



# Sample Image – Conventional PAL CCTV

Please visit <http://www.gsf.com.my> for more sample images & videos

Professionals POE IP camera. Recorded at 704x576 resolutions with LuxRiot NVR.



# Sample Image – High Definition CCTV

Please visit <http://www.gsf.com.my> for more sample images & videos

Arecont Vision AV3100M Mega Pixel POE IP camera. Recorded at 1920x1200 resolutions with LuxRiot NVR.

